

PSE Cartridge XL type

(Pleated membrane cartridge)



- Ultrahigh-flow-rate cartridge filter featuring outstanding filtering performance for cleaning large-sized glass substrates for 6th- and 7th- generation liquid-crystal displays.
- Proprietary membrane offers filtering excellence by combining excellent particle-retention performance, a high flow-rate, and a long service life.

An ultrahigh flow-rate type (twice as high as before) has made its debut for inclusion into the PSE Cartridge series - a series well-received for its high flow rates and excellent retention performance.

Best suites for cleaning large-sized glass substrates for 6th- and 7th-generation liquid-crystal displays.

Major Applications

Employing a field-proven membrane featuring a distinctive asymmetric structure (PSE membrane), the cartridge offers excellent filtration performance for applications calling for high particle-retention performance, a high flow-rate, and a long service life. For example:

- Filtering of cleaning water to be supplied to wet-process equipment for the manufacture of large-sized LCD glass substrates

Specific Features

1. High flow-rate

A flow-rate twice as high as before has been achieved. with a pore size of 0.2 μm , a flow-rate of 100 liters/min. or greater is secured. (at $\Delta P = 0.02 \text{ MPa}$)

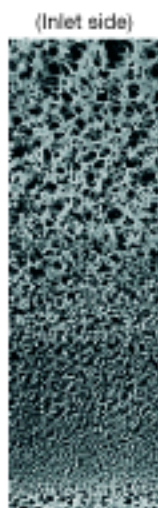
2. Excellent particle-retention performance

A distinctive dense inner layer of the PSE membrane, featuring a well-defined pore-size distribution, retains fine particles without fail.

3. Readily fits into existing housings

Since the cartridge can readily fit into extensive high-flow-rate-capable housings currently in use, ultrahigh flow-rates can be achieved without the need for replacing existing housings.

* For ways of loading into your housings now in operation, please contact Fujifilm.



(Inlet side)
(Outlet side)
SEM photo of a cross-section of the PSE membrane

Flow Rate Characteristics

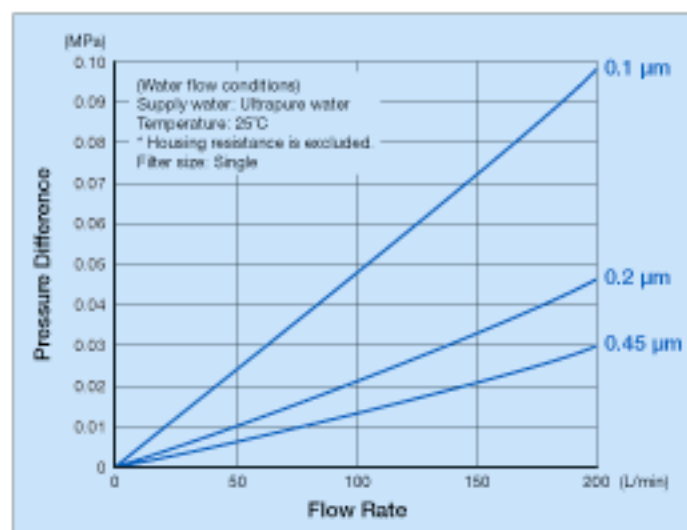


Table of Performance Characteristics

Item	Unit	Performance			Remarks
Pore size	μm	0.1	0.2	0.45	
Size	Length	266			(Note 1)
	Outer diameter	81.5			
Max. differential pressure	25°C MPa	0.34 (Positive pressure)			
Applicable pH range		1 - 14			(Note 2)

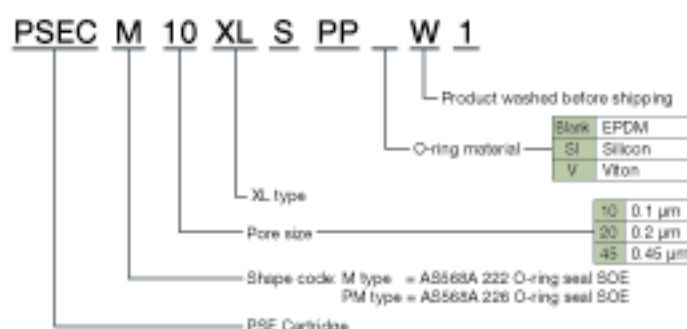
(Note 1) For detailed dimensions of Shape M type, please contact Fujifilm.

(Note 2) In case of chemical fluid filtration, a pre-test should be performed under users' own condition.

[Materials]

Name of part	Material
Guard	Polypropylene
Center core	Polypropylene
Support	Polypropylene
Membrane filter	Polysulfone (Asymmetric membrane)
O-ring	EPDM (Silicon, Viton)

Product Codes



Shape	Pore size		
	0.1 μm	0.2 μm	0.45 μm
M type	PSECM10XLSPPW1	PSECM20XLSPPW1	PSECM45XLSPPW1
PM type	PSECPM10XLSPPW1	PSECPM20XLSPPW1	PSECPM45XLSPPW1

Size

