

FUJIFILM **ImageHunter**

V2007 Enhanced Printing System



The ultimate print assistant

The **FUJIFILM ImageHunter Enhanced Printing System** is primarily designed for easy printing with all professional photo quality pigment ink wide format printers from EPSON, HP and Canon. Take all the pain out of printing accurate, predictable and vibrant colors or pure Black and White. ImageHunter will keep it easy and simple to get perfect prints every time.

ImageHunter allows easy sizing and media selection with an accurate preview. It also offers intelligent nesting to make sure that paper wastage is kept to an absolute minimum. Full color management with built-in ICC profiles for all FUJIFILM media guarantees excellent color rendition and color matching across different media types.

The new ImageHunter V2007 features

- Easier user interface
- Improved quality
- Lower price
- Platform independent solution.

ImageHunter will save time and media, with minimum hassle.

EPSON – HP – Canon

ImageHunter supports the latest **EPSON Stylus Pro** printers, the new **HP Z-series** printers and the **Canon iPF** photo printers. Software is provided with ICC profiles for **FUJIFILM Professional Inkjet** media.



Easy Printing Interface (EPI)

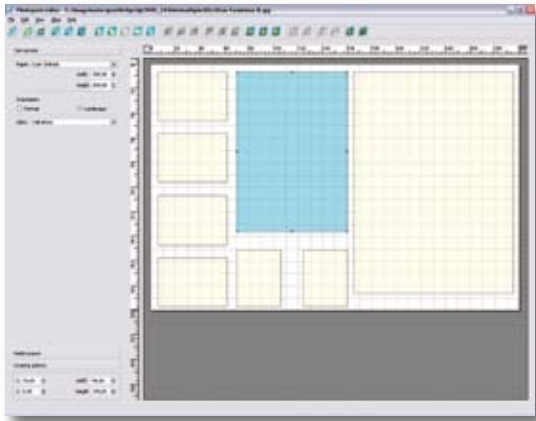
Printing just became a lot easier. Just prepare images in Adobe Photoshop® or another imaging software. Then select the image, the print size and media – and PRINT!

The Easy Printing Interface is a 5-step wizard.

1. **Image Location** - Browse to find the folder that contains your images. Thumbnails will be generated and shown at the bottom part of the interface. Folders that are used frequently like a 'Ready to Print' folder can be added to the favorites. These folders are updated automatically.
2. **Layout** - This can be a pre-defined single size e.g. 20x25 cm (8 x 10 inch) or a photopack such as the one shown in the image. You can drag thumbnails.
3. **Image Options** - Here you can select fill or fit, rotate, mirror, zoom and pan. The Fit or Fill option is interesting for matching images to a preset print size.
4. **Profile** - Select the media profile by selecting the name of the paper. All necessary settings are made automatically.
5. **Print Options** - Here you can select the number of copies, crop marks, print cutter on/off and nesting.
6. **Then press the big PRINT button.**

With EPI you simply load up your standard print sizes and 'Photopacks', together with the different types of media that you use. Image folders can be imported and stored in 'favorites' for easy access.

The EPI will save you time and, perhaps more importantly, it will save money by reducing media wastage.



Photopack Editor

Available with all versions

This intuitive add-on allows you to easily create your own photopack templates. Create multi image packs for portraits and weddings or single image packs for school photography.

Just type in the size of your page, draw the individual image sizes and save. Or use an existing template and adapt to your own needs.

Configurations

The ImageHunter product range includes 3 configurations:

NEW!

Photo Edition EPI (Easy Printing Interface)

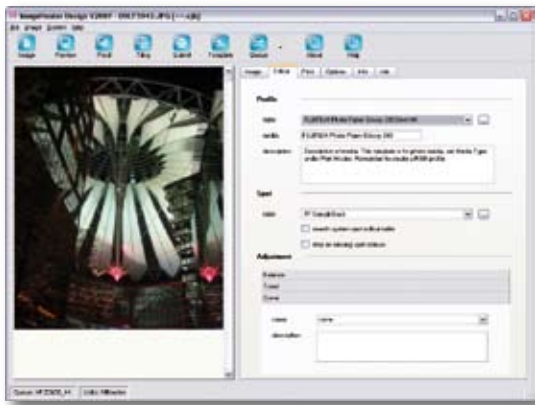
Ideal for printing images that have already been prepared in Adobe PhotoShop® or any other imaging software. Printing exactly what you want has never been easier.

Photo Edition

This version adds the Design module, the classic operating interface and the color module. Versatile interfaces for advanced users.

Photo Edition Plus

Adds full Postscript support.

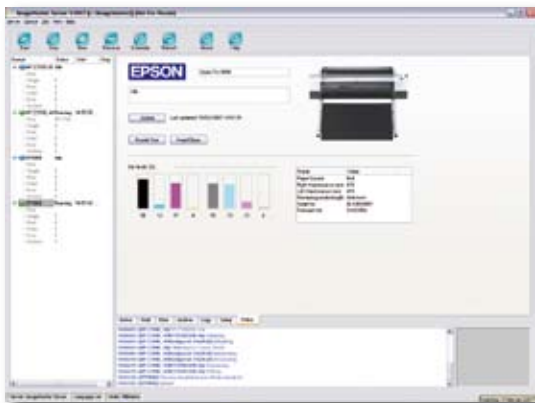


Design Interface

The classic interface with full RIP features. For advanced users, this offers optimal control over all the functionality of the software.

Features

Layout preview, tiling, panelling, size and crop, image preview, step and repeat, templates, nesting, hot folder and ICC color management, mirror and rotate, interpolation and anti-aliasing, multiple client/server set-up, Mac and PC port monitor, job marks and labels, separation, various screening options.



Server

The Server is the heart of the image processor where it all happens! This is where the software is connected with the printer. You can select your printer model, your paper type and the connection type here. Also nesting preferences can be changed from the server. You can monitor the status of your printer and the jobs as they are being processed. The Server will also put images on hold until the proper media is loaded and selected. Furthermore the server can archive your images for reprint at a later stage.

Features

Printer control, reprint, archive, spooler, multiple simultaneous queues, queue management, queue scheduling, remote printing, automatic and manual linearisation, densitometer and spectrometer support, spot colour table support, colour adjustment control, log report, job saving and recall, font loader and management, ink level monitoring.

For HP printers a media synchronization and color calibration button is available.



Minilab File Output Option

This optional new feature together with EPI allows you to export color managed files, either single images or more important photopacks, to the Minilab Server.

Support is available for FUJIFILM FRONTIER and for current models from Noritsu, AGFA, DKS or other minilabs by a generic device.

Each configuration has 3 versions depending on the printer width:

- Up to 17" or 43cm
- Up to 24" or 60cm
- Up to 44" - 60" or 112 - 152cm

Specifications

PRODUCT	Maximum roll width	FUJIFILM/EPSON Stylus Pro	HP Designjet	CANON image-PROGRAF	EPI	DESIGN	SERVER	COLOR	TOOLS	HUNTER	POSTSCRIPT	QUEUE(S)
ImageHunter Photo Edition EPI Easy Printing Interface	17"	4x00		iPF5000	•		•		•	•		1
	24"	7x00	Z2100-24 Z3100-24		•		•		•	•		1
	44"	9x00	Z2100-44 Z3100-44	iPF8000	•		•		•	•		1
	60"			iPF9000								
ImageHunter Photo Edition	17"	4x00		iPF5000	•	•	•	•	•	•		1
	24"	7x00	Z2100-24 Z3100-24		•	•	•	•	•	•		1
	44"	9x00	Z2100-44 Z3100-44	iPF8000	•	•	•	•	•	•		2
	60"			iPF9000								
ImageHunter Photo Edition Plus	17"	4x00		iPF5000	•	•	•	•	•	•	•	1
	24"	7x00	Z2100-24 Z3100-24		•	•	•	•	•	•	•	1
	44"	9x00	Z2100-44 Z3100-44	iPF8000	•	•	•	•	•	•	•	2
	60"			iPF9000								

ICC color management

X-Rite / GretagMacbeth LogoSync engine

Screening

Proprietary error diffusion (including multi-level), clustered halftones (spot, angle frequency), dispersed half tones.

No. of design seats

Unlimited

No. of print queues

Unlimited

Connectivity

Ethernet (TCP/IP), USB, Firewire, SCSI, Centronics, Spooler

Languages

English / Deutsch / Français / Español / Català / Italiano

Minimum system requirements

MS Windows 2000 SP4 / XP SP2

Intel Pentium IV

1Gb RAM

80 Gb HD

USB2

Monitor 1024x768, 24 bit



Mac OSX 10.4.8 (Tiger)

G5 (PowerPC) / MacPro (Intel) – Universal

1 Gb RAM

80Gb HD

USB2

Monitor 1024x768, 24 bit



Profiles

Profiles are available for all FUJIFILM inkjet media for the professional inkjet printers from EPSON, HP and Canon: EPSON Stylus Pro series, HP Z2100 and Z3100 series and Canon iPF 12color series.



FUJIFILM/EPSON INKJET PRINTERS



HP Z-SERIES INKJET PRINTERS



FUJIFILM PROFESSIONAL MEDIA



FUJIFILM PRINTING SYSTEMS



COLOR MANAGEMENT TOOLS