



## IMAGEHUNTER V3

### Enhanced Printing System The ultimate print assistant



- ▶ **ImageHunter V3** is a versatile and powerful RIP Software for the most demanding production environment. It supports multiple users and multiple printers from all the major printer manufacturers.
- ▶ Easy to install and set-up with an intuitive user interface that gets the job done fast, it operates on both PC and Mac (including 64bit) incorporating Client/Server architecture.
- ▶ **ImageHunter V3** supports an extensive range of file formats including PDF. The ImageHunter RIP is upgradeable, to cope with additional printers and larger printers.

## ▶ EPSON - HP - CANON

ImageHunter V3 supports the latest EPSON Stylus Pro printers, the HP Z-series printers and the Canon iPF photo printers. Software is provided with a selection of ICC profiles for FUJIFILM Professional Inkjet media with updated and new profiles available through the live update tool.

### Easy Printing Interface (EPI) V3

The latest version EPI now allows images to be taken straight from the camera to be colour corrected, sized profiled and printed right first time every time!

#### The Easy Printing Interface is a 5-step wizard.

1. **Image Location** — Browse to find the folder that contains your images. Thumbnails will be generated and shown at the bottom part of the interface. Folders that are used frequently like a 'Ready to Print' folder can be added to the favorites. These folders are updated automatically.
2. **Photopack** — Now updated in V3 to include multiple folder options including mirror edges for easy canvas production, panorama for tryptic style images and addition of text and colour.
3. **Image Options** — Also updated for V3 with advanced colour editing including batch corrections, apply filters and one touch sepia or black and white.
4. **Profile** — Select the media profile by selecting the name of the paper. All necessary settings are made automatically.
5. **Print Options** — Here you can select the number of copies, crop marks, boundary marks, print cutter on/off and nesting.

#### Then press the big PRINT button.

With EPI you simply load up your standard print sizes and 'Photopacks', together with the different types of media that you use. Image folders can be imported and stored in 'favorites' for easy access.

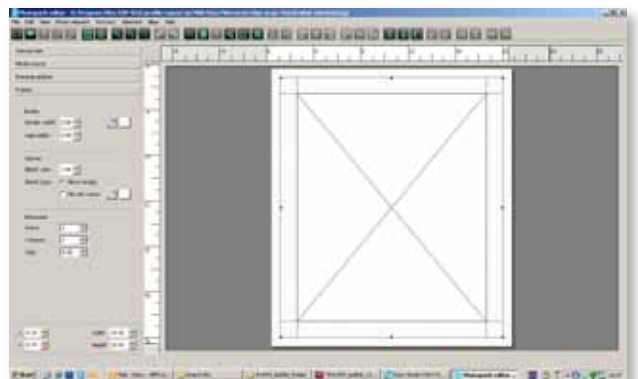
The EPI will save you time and, perhaps more importantly, it will save money by reducing media wastage.

### Photopack Editor

#### Available with all versions

This intuitive add-on allows you to easily create your own photopack templates. Create multi image packs for school photography, or multiple mirrored canvasses for large art work installations.

Just type in the size of your page, draw the individual image sizes and save. Or use an existing template and adapt to your own needs. Add text, gaps and borders of any colour and intensity.



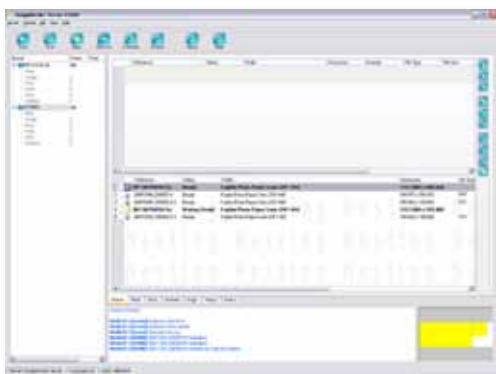


### Design Interface

The classic interface with full RIP features. For advanced users, this offers optimal control over all the functionality of the software.

### Features

Layout preview, tiling, panelling, size and crop, image preview, step and repeat, templates, nesting, hot folder and ICC color management, mirror and rotate, interpolation and anti-aliasing, multiple client/server set-up, Mac and PC port monitor, job marks and labels, separation, various screening options.



### Server

The Server is the heart of the image processor where it all happens! This is where the software is connected with the printer. You can select your printer model, your paper type and the connection type here. Also nesting preferences can be changed from the server. You can monitor the status of your printer and the jobs as they are being processed. The Server will also put images on hold until the proper media is loaded and selected. Furthermore the server can archive your images for reprint at a later stage.

### New Features in V3

ImageHunter V3, the flagship product within the Fujifilm RIP software range now includes the Adobe PDF Library as standard replacing the existing old Jaws engine as the main RIP engine.

Benefits of the Adobe PDF Library are:

- ▶ Exceptional quality and reliability of proven Adobe PDF technology
- ▶ Ability to handle PDF files of virtually any size and version
- ▶ Compliant with the latest Adobe PDF specification
- ▶ Interoperable with Adobe products
- ▶ Consistent support on all supported platforms
- ▶ High quality smooth graduations and blends rendering
- ▶ Handling of live transparencies and layering

Software dongle

Remote access software for rapid support

### Configurations

The ImageHunter product range includes 2 configurations:

#### ImageHunter Photo V3

Ideal for printing images that have already been prepared in Adobe PhotoShop® or any other imaging software.

Printing exactly what you want has never been easier.

#### ImageHunter Pro V3

Adds full PostScript support.

Each configuration has 4 versions depending on the printer width:

- ▶ Up to 17" or 43 cm
- ▶ Up to 24" or 61 cm
- ▶ Up to 48" or 122 cm
- ▶ Up to 64" or 163 cm

### MINILAB FILE OUTPUT OPTION

This optional new feature together with EPI allows you to export color managed files, either single images or more important photopacks, to the Minilab Server.

Support is available for Fujifilm and for current models from Noritsu, AGFA, DKS or other minilabs by a generic device.

## ► Specifications

PRODUCT	Maximum roll width	FUJIFILM I EPSON Stylus Pro	HP Designjet	Canon image PROGRAF Photo	EPI	LAYOUT	DESIGN	SERVER	COLOUR	TOOLS	HUNTER	POSTSCRIPT	QUEUE(S)
ImageHunter <b>Photo V3</b>	17"	38x0, 4xx0		iPF5x00	•		•	•	•	•	•		1
	24"	7xx0	Z-series 24	iPF6x00	•		•	•	•	•	•		1
	48"	9xx0	Z-series 44	iPF8x00	•		•	•	•	•	•		1
	64"	11880	Z-series 60	iPF9x00	•		•	•	•	•	•		1
ImageHunter <b>Pro V3</b>	17"	38x0, 4xx0		iPF5x00	•	•	•	•	•	•	•	•	1
	24"	7xx0	Z-series 24	iPF6x00	•	•	•	•	•	•	•	•	1
	48"	9xx0	Z-series 44	iPF8x00	•	•	•	•	•	•	•	•	2
	64"	11880	Z-series 60	iPF9x00	•	•	•	•	•	•	•	•	2

### ICC color management

Adobe CMM Engine

### Screening

Proprietary error diffusion (including multi-level), clustered halftones (spot, angle frequency), dispersed half tones. Supports Epson RGB & CMYK HTM technology.

### No. of design seats and ESP clients

Unlimited

### No. of optional queues

Unlimited

### Connectivity

Ethernet (TCP/IP), USB, Firewire, Spooler

### Languages

English/Deutsch/Français/Español/Català/Italiano/Suomi/Svensk/Português

### Minimum system requirements

MS Windows 7 / XP SP3 / VISTA

Intel Dual Core

2Gb RAM

200Gb HD

USB2

Monitor 1280x1024, 24 bit



Mac OSX 10.4 (Tiger)

MacPro (Intel) – Universal

2Gb RAM

200Gb HD

USB2

Monitor 1280x1024, 24 bit



### Profiles

Profiles are available for a selection of FUJIFILM inkjet media for the professional inkjet printers from EPSON, HP and Canon: EPSON Stylus Pro series, HP Z-series and Canon iPF 12color series.

### Rendering Engine

Adobe PDF Library



FUJIFILM/EPSON INKJET PRINTERS



HP Z-SERIES INKJET PRINTERS



FUJIFILM PROFESSIONAL MEDIA



FUJIFILM PRINTING SYSTEMS



COLOR MANAGEMENT TOOLS

Please contact your local FUJIFILM partner for further information.

# FUJIFILM

### FUJIFILM Europe NV

Europark-Noord 21-22

9100 Sint-Niklaas

Belgium

T +32 3 760 02 00

F +32 3 776 91 22

marketing\_feb@fujifilm.eu

www.fujifilm.eu/lfp

### FUJIFILM UK Ltd

UNIT 10a St Martins Way

St Martins Business Centre

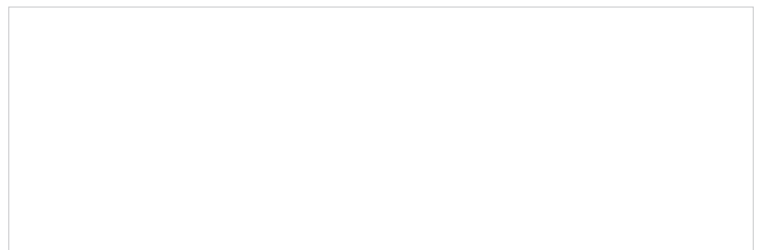
Bedford MK42 OLF

T +44 1234 21 77 24

F +44 1234 21 77 28

photoimaging@fuji.co.uk

www.fujifilm.eu/lfp



Specifications are subject to change without notice. The name FUJIFILM and the FUJIFILM logo are trademarks of FUJIFILM Corporation. All other trademarks shown are trademarks of their respective owners. All rights reserved.